

# VICTOR CORPORATE PARK

VICTOR PARKWAY & PEMBROOKE ROAD LIVONIA, MICHIGAN



## Outstanding Opportunities

Strategically positioned in Livonia's vibrant I-275 corridor, the two-story Victor Corporate Park provides 88,000 square feet of premium office space. Open floor plates are easily divisible to 3,000 square feet, combined with 9' and 10' ceiling height, provide maximum flexibility for a range of uses, including prototype development and display space. Premium office finishes throughout reflect the quality of the building and its occupants. Broad window expanses and attractive landscaping complement its overall design. Opportunities for exterior signage enhance exposure, while abundant, adjoining parking contiguous to multiple entrances ensures easy access for employees and guests.



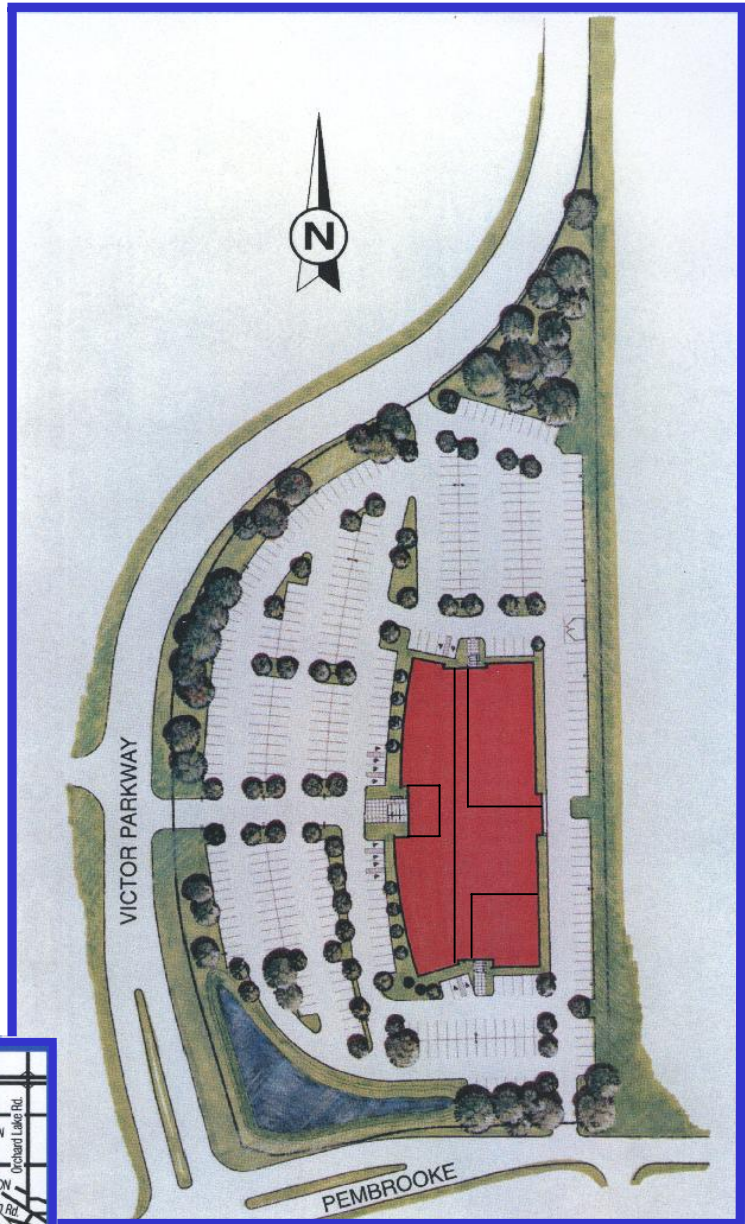
STUART FRANKEL  
DEVELOPMENT  
COMPANY

2301 W. Big Beaver  
Suite 510  
Troy, Michigan 48084  
248-649-2924 248-649-2373 (Fax)  
Email: [leasing@sfdco.com](mailto:leasing@sfdco.com)

# VICTOR CORPORATE PARK

VICTOR PARKWAY & PEMBROOKE ROAD LIVONIA, MICHIGAN

Victor Corporate Park provides quick access to regional freeways, customers, support services, including hotels and restaurants, and a skilled labor market. Occupants benefit from experienced, proactive property management.



STUART FRANKEL  
DEVELOPMENT  
COMPANY

2301 W. Big Beaver  
Suite 510  
Troy, Michigan 48084  
248-649-2924 248-649-2373 (Fax)  
Email: [leasing@sfdco.com](mailto:leasing@sfdco.com)